

# ACE-DHH Newsletter

Association of College Educators - Deaf & Hard of Hearing

Fall 2012

**Inside this Issue:**

Conference Accommodations 2

In & Around Santa Fe, NM 3

Conference Agenda 4

Call for new Committee Members 6

Remembering Mark Gobble 7

ACE-DHH Board Members 8

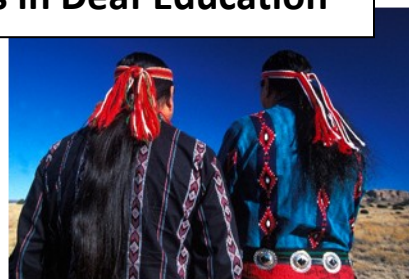
FINAL Request for Presentation Proposals 11

Presenter information Sheet 12

Proposal Summary Page 13



**"Creating New Vistas in Deaf Education"**



## ACE-DHH

### 2013 Conference News

### February 21 - 23, 2013

### Santa Fe, New Mexico



Images Courtesy of the Santa Fe Convention & Visitors Bureau:  
[http://santafe.org/Image\\_Library/index.html](http://santafe.org/Image_Library/index.html)

**To Register for the 2013 ACE-DHH Conference and the Inn & Spa at Loretto, Please visit:**  
<http://acedhh.org/conference.htm>

Editor: Kate Reynolds, Ph.D.

Editorial Assistant: Mia Burlet

Publications Committee:  
Elaine Gale and Debbie Golos

## **Where to Stay / How to Get There / What to Do in Santa Fe**



### **Accommodations:**

The conference will be held at the beautiful Inn and Spa at Loretto, which is currently the only New Mexico hotel on Condé Nast Traveler's 2012 Gold List. Explore this luxurious hotel:

<http://www.innatloretto.com/>.

You can make your reservations at:

<https://gc.synxis.com/rez.aspx?Hotel=19510&Chain=5156&group=GOD7H8>

ACE-DHH delegates can check in on Wednesday and check out on Sunday at the conference rate. CED members can check in Tuesday for their meetings all day on Wednesday. Please note that wifi is available free to all ACE-DHH guests. Parking is available at \$18.00/day, and there is a service fee of \$7.00 per night, which includes housekeeping gratuities, high speed wireless Internet access, access to the fitness room and pool, and local and toll-free telephone calls.

### **Flights to Albuquerque & Santa Fe, NM:**

American Airlines & American Eagle fly into Santa Fe. American, Frontier, Delta, Southwest, US Airways, United and several others all fly into Albuquerque.

### **Ground Transportation for Albuquerque & Santa Fe, NM:**

If you are flying into Albuquerque, there are two methods of ground transportation, apart from driving:

#### *Shuttle between Albuquerque and Santa Fe:*

The Sandia Shuttle runs from the Albuquerque airport to Santa Fe hotels, at a cost of \$27 one way or \$47 round trip. For more information or to make reservations:

<http://www.sandiashuttle.com/>

### Rail between Albuquerque and Santa Fe:

The New Mexico Rail Runner <http://www.nmrailrunner.com/> travels between Albuquerque and Santa Fe weekdays and Saturday — no service on Sunday. Schedules from the Albuquerque Sunport Airport are located at [http://www.nmrailrunner.com/airport\\_going.asp](http://www.nmrailrunner.com/airport_going.asp). Tickets are approximately \$9 (seniors over 62 \$7) and can be purchased at this discount rate online at <http://www.nmrailrunner.com/tickets.asp>. Regular fare tickets can be purchased on the train. Free shuttles run between the Sunport airport and the downtown Albuquerque Depot. Free trolleys run between the Santa Fe Depot and the downtown hotels. More information will be forthcoming regarding the airport shuttle pickup location.

### Weather Conditions at that Time:

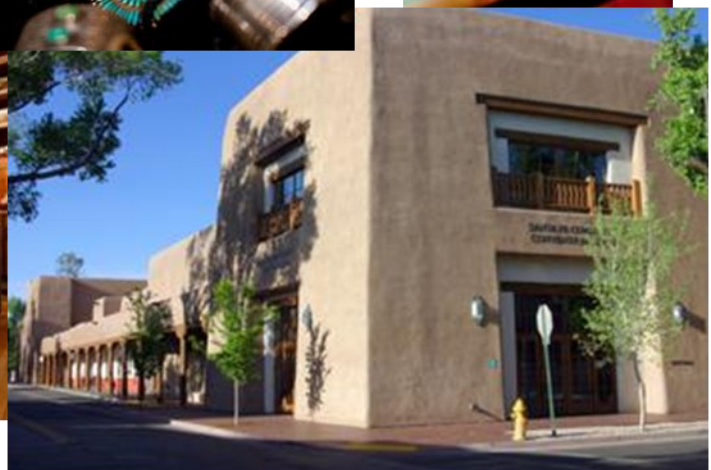
The temperatures for February average in the 40s -50s (F). Expect light snow and bright sunshine. Skiing in the area is at its peak until approximately the end of February.

### What to do in Santa Fe:

Santa Fe is a world-renowned travel destination, full of great restaurants, culture, art, history, and remarkable architecture. It is filled to the brim with an array of things to do! We encourage you to browse through the Santa Fe Official Travel site at [http://santafe.org/Visiting\\_Santa\\_Fe/Things\\_to\\_Do/](http://santafe.org/Visiting_Santa_Fe/Things_to_Do/). What could be more fun than exploring beautiful Santa Fe with your ACE-DHH colleagues and friends!



Life in Santa Fe, New Mexico



## Wednesday, February 20

- 1:30-3:00 Tour of the New Mexico School for the Deaf (tentative)
- Evening ACE-DHH Executive Board meeting

## Thursday, February 21

- 7:30-9:00 am Poster Session/Breakfast
- 9:15-10:00 Keynote Presenter: Dr. Ronald J. Stern, President, Council of Educational Administrators of Schools/Programs for the Deaf & Superintendent, New Mexico School for the Deaf
- 10:15-11:00 Business Meeting
- 11:15-12:00 Concurrent Sessions
- 12:00-1:30 Lunch (on your own)
- 1:30-2:15 Concurrent Sessions
- 2:30-3:15 Concurrent Sessions
- 3:30-4:15 Concurrent Sessions
- 4:30-5:15 Fireside Chat with Dr. Susan Easterbrooks: "National Research and Development Center for Literacy and Deafness"
- 5:30-7:00 Reception

## Friday, February 22

- 7:30-9:00 am Continental Breakfast/Visit our Sponsors
- 9:15-10:00 Concurrent Sessions
- 10:15-11:00 Concurrent Sessions
- 11:15-12:00 Concurrent Sessions
- 12:00-1:30 Lunch (on your own)
- 1:30-2:15 Concurrent Sessions
- 2:30-3:15 Concurrent Sessions
- 3:30-4:15 Concurrent Sessions
- 4:15-5:30 SIG Meetings/CED Training  
Dinner (on your own)



*Creating New Vistas in Deaf Education*

## Saturday, February 23

- Breakfast on your own
- 9:00-9:45 am      Concurrent Sessions
- 10:00-11:00      Business Meeting
- 11:15-12:00      Concurrent Sessions
- 12:00-1:30      Lunch (on your own)
- 1:30-2:15      Concurrent Sessions
- 2:30-3:15      Concurrent Sessions
- 3:30-4:15      Concurrent Sessions
- 4:15-5:30      Free Time/ACE-DHH Executive Board Meeting
- 6:00-9:30      Banquet



## Council on Education of the Deaf (CED) Meetings:

- Tuesday, February 19th:      7 PM - 9 PM      Board Meeting
- Wednesday, February 20th:      8 AM - 4 PM      Board Meeting
- Friday, February 22nd:      4:15 PM- 5:30 PM      CED Training



## From The ACE-DHH Membership Committee

*Caroline Guardino, Sarah Ammerman, & Joanna Cannon*

The Membership and Elections Committee hopes you are having a wonderful fall semester and... occasionally thinking of how to serve the Association. If you have forgotten us, we are writing to help you remember!! We sincerely hope you will consider joining us as committee members in the Association of College Educators of the Deaf and Hard-of-Hearing (ACE-DHH), beginning in 2013. As a committee member, you will have the special privilege of running for one these most esteemed positions:

- **Secretary**

You would serve as the official keeper of the records of the Association, including recording the minutes of all business meetings and handle official ACE-DHH correspondence.

- **Membership and Elections Committee: 1 chair, 2 additional members**

You would recruit members, maintain and disseminate lists of current membership, solicit nominations from members for each office scheduled for elections, prepare a ballot and disseminate to members, and hold elections at the annual meeting.

- **Awards Committee: 1 chair, 2 additional members**

You would solicit nominations for each award, determine award recipients, and present awards at the annual meeting. Who doesn't loving giving prizes away?!

- **President Elect**

You would plan the theme and the content of the program for the annual conference. In addition, you would be invited to observe at the Council on Education of the Deaf (CED) Board which meets twice each year. Finally, you would be the successor to the office of President of the Association. Doesn't the word "President" next to your name have a nice ring to it?

Please let us know as soon as possible if you are interested in running for any of these positions. If you simply cannot fit it into your schedule this year, do you know someone who would be a good candidate? If so, please let us know, and pass this information along to that person as well. Elections will take place at the Conference in February in Santa Fe, New Mexico.

If elected, you will have the distinct pleasure of working with a group of motivated, bright professors who are all dedicated to preparing outstanding teachers of children who are deaf or hard-of-hearing. You'll have the opportunity to be instrumental in making ACE-DHH an even better group of professionals. These are incredibly important positions; we need talented people to fill them!

- Do not hesitate—contact us soon at [caroline.guardino@unf.edu](mailto:caroline.guardino@unf.edu) so that we can add your name to the list of potential candidates!

- Please be reminded that absentee ballots must be received by the first day of the conference, and will only be accepted from paid members.

*Rest In Peace*

*Mark E. Gobble*



It is with great sadness that we announce the death of ACE-DHH member Mark E. Gobble. Mark was killed by a hit and run driver in Austin, Texas on June 10, 2012 while out for a morning jog.

Mark was just finishing his PhD at UT Austin in Educational Psychology and had accepted a faculty position at Boston University. Mark was a member of the pepnet2 Research and Evidence Synthesis team at UT Austin and participated in many of the Needs Assessment activities during pepnet2's first year. His research interests were diverse and spanned many areas in deaf education.

He is survived by his wife Leslie and two small children, Shanna and Trent.

He will be greatly missed by people across the country, from Florida School for the Deaf, Gallaudet, MARK skateboards, Texas School for the Deaf, UT Austin, JDSDE, AERA. and countless others.

A full obituary and an opportunity to share thoughts with the family is available at <http://www.legacy.com/guestbook/statesman/guestbook.aspx?n=mark-gobble&pid=158004278&cid=full>.



## 2013 ACE-DHH Board Members



**President:**

Tamby Allman  
Texas Woman's University  
[TAllman@mail.twu.edu](mailto:TAllman@mail.twu.edu)



**Past President:**

Claudia Pagliaro  
Michigan State University  
[pagliaro@msu.edu](mailto:pagliaro@msu.edu)



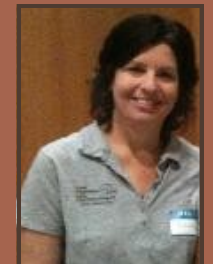
**President Elect:**

Janet Jamieson  
University of British Columbia  
[janet.jamieson@ubc.ca](mailto:janet.jamieson@ubc.ca)



**Treasurer:**

Susan Lane-Outlaw  
Rochester Institute of Technology -  
National Technical Institute for the  
Deaf (NTID)  
[slo@mail.rit.edu](mailto:slo@mail.rit.edu)



**Secretary:**

Rachel Narr  
California State University –  
Northridge (CSUN)  
[rachel.narr@csun.edu](mailto:rachel.narr@csun.edu)

# ACE-DHH

Association of College Educators – Deaf & Hard of Hearing







## 2013 ACE-DHH Board Members



**Publications Committee Chair:**

Kate Reynolds  
The University of New Orleans  
[kate.reynolds@uno.edu](mailto:kate.reynolds@uno.edu)



**Membership Committee Chair :**

Caroline Guardino  
University of North Florida  
[caroline.guardino@unf.edu](mailto:caroline.guardino@unf.edu)



**Awards Committee Chair :**

Pam Luft  
Kent State University  
[pluft@kent.edu](mailto:pluft@kent.edu)



**Legislative Committee Chair :**

Sue Rose  
University of Minnesota  
[srose@umn.edu](mailto:srose@umn.edu)



**Webmaster:**

Chad Smith  
Texas Woman's University  
[csmith17@twu.edu](mailto:csmith17@twu.edu)





## 2013 ACE-DHH Board Members

### CED representatives:



Debbie Haydon - [Debbie.Haydon@eku.edu](mailto:Debbie.Haydon@eku.edu) - Eastern Kentucky University



Deb Stryker – [dstryker@bloomu.edu](mailto:dstryker@bloomu.edu) - Bloomsburg State University



Pam Luft – [pluft@kent.edu](mailto:pluft@kent.edu) - Kent State University (CED President)

### **2013 Santa Fe Local Arrangement Co-Chairs**



Sharon Baker - The University of Tulsa - [bakers@utulsa.edu](mailto:bakers@utulsa.edu)



Chad Smith - Texas Woman's University - [csmith17@twu.edu](mailto:csmith17@twu.edu)

*See you in Santa Fe!*

## ALMOST FINAL CALL FOR PROPOSALS



*Creating New Vistas in Deaf Education*

### **Santa Fe, New Mexico ~The Inn and Spa at Loretto**

The Association of College Educators—Deaf and Hard of Hearing cordially invites you to submit a proposal for the 39th annual conference  
<http://acedhh.org/conference.htm>

#### **Keynote Presenter: Dr. Ronald J. Stern**

Superintendent, New Mexico School for the Deaf &  
President, Conference of Educational Administrators of Schools and  
Programs for the Deaf

**Deadlines: Proposals must be submitted by October 31, 2012.  
Acceptance letters will be sent by email by November 28th, 2012.  
Late proposals will be accepted only if space is available.**

**Please note: All presenters and co-presenters must register for the conference.**

*Proposals will be reviewed by the Program Committee in a blind review format.*

**Proposals should be submitted electronically in Microsoft Word to:  
Janet Jamieson, Program Chair, at [janet.jamieson@ubc.ca](mailto:janet.jamieson@ubc.ca)**

**Please include the following in your proposal:**

1. Presenter(s) Information Sheet & 2. Proposal Summary Page

# Presenter Information Sheet:

Name of Presenter:

Professional Affiliation:

Mailing Address:

Phone:

Email:

Name of Co-Presenter(s):

Professional Affiliation:

Mailing Address:

Phone:

Email:

Title of Proposed Presentation:

Type of Session Required: 45 minute presentation OR 90 minute poster session

If your proposal is not accepted as a 45 minute presentation would you be willing to present a poster session? YES \_\_\_\_\_ NO \_\_\_\_\_ ?

*Each room will be equipped with a presenter's table, projector, and screen. You are required to bring your own computer. There is wireless access in all presentation rooms.*

## **Proposal Summary Page:**

Please submit a proposal summary page with the following information ONLY.

No identifying information should be on the proposal summary page.

**Presentation Title:** (Please make sure this matches the title you gave on the presenter information sheet)

**Presentation Summary:** (For the conference program– 45 words or less)

**Presentation Proposal:** Including and clearly stating the following: (300-500 words)

- Topic need/ Rationale
- Methodology
- Results/Outcomes
- Importance to the membership of ACE-DHH